

# IN CASE YOU HAVE DOUBLE EXTRUDER PRINTER. INSTALLATION OF 2nd EXTRUDER.



Find the **E2** extruding mechanism. Install it onto the right side (on the other side of **E1**) of tower by inserting the block into the aluminum slot and twist the bolt clockwise.



Insert the **J** male connector onto the **J** female Motor connector.



Install the filament plastic holder onto the left stand and twist the nut to lock it. Then install the **2 M3x 6mm** bolts with the blocks.



Inserting the block into the Right side aluminum slot and twist the bolt to lock it.



Install the filament sensor **H** onto the cardan joint by one **M3 x 6mm** bolt. Then install the cardan joint onto the filament stand by one **M3 x 6mm** bolt.



Insert the **L** filament tube into the **L** feeder. Then insert the orange locker to stop tube from falling out.



Insert the **N** tube into **N** connector.



Congratulation! You have install the 2nd extruder.



# WANHAO 12/230 DUPLICATOR GETTING STARTED GUIDE



VIDEO INSTRUCTION

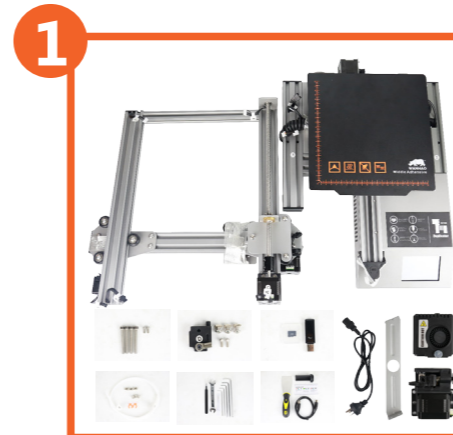
Thanks for choosing Wanhao 3D Printer D12/230. It's important that you follow these steps carefully to ensure correct setup of your 3D Printer. You can also visit <http://www.wanhao3dprinter.com/Download Software/ D12 unboxing> for step by step guide on unboxing and setup, levelling, filament installation and printing.

## Package Contents:

- 6 sets components pack as left picture
- 1x Wanhao D12/230 printer
- 1x filament spool stand (You may have 2 in case you have dual extruder)
- 1x power plug
- 1x filament feeding mechanism (You may have 2 in case you have dual extruder)
- 1x printing head



# ASSEMBLING AND INSTALLATION

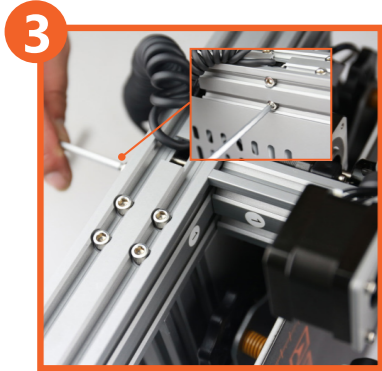


Place the printer components onto a flat table. Please handle with care.



Remove the protection foam and tape from position.

# ASSEMBLING AND INSTALLATION <CONT>



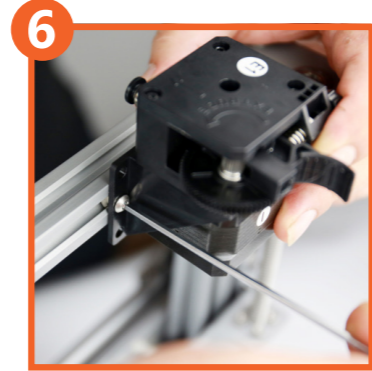
Put the printer base on it's side. Install the printer tower onto the base. Then use 4pcs M5 x 40mm bolt to lock the tower onto the base.  
**Note:** On the base there's sticker No.1 and on the tower there's sticker No.1. So No.1 base match to the No.1 tower. No.2 base match to the No.2 tower.



Install the printing head onto the gantry. Then to lock the head with **2 M3 x 6mm** locking screw.



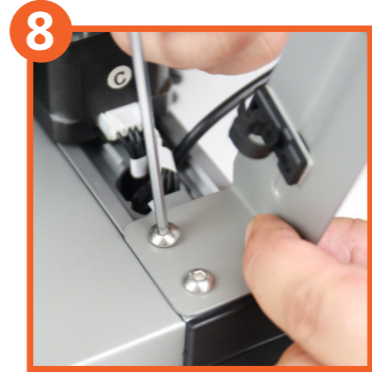
To push the printing head gently to ensure well secured. If not, re-lock the bolts.



Find the **E1** extruding mechanism. Install it onto the left side (near the Z axis screw) of tower by inserting the block into the aluminum slot and twist the bolt Mushroom head screw M4 x 5mm clockwise.



Install the filament plastic holder onto the left stand and twist the nut to lock it. Then install the **2 M3x 6mm** bolts with the blocks.



Inserting the block into the left side (near Z axis screw) aluminum slot and twist the bolt (Mushroom head screw M4 x 8mm) to lock it.



Install the filament sensor onto the cardan joint by one **M3 x 8mm** bolt. Then install the cardan joint onto the filament stand by one **M3 x 8mm** bolt.

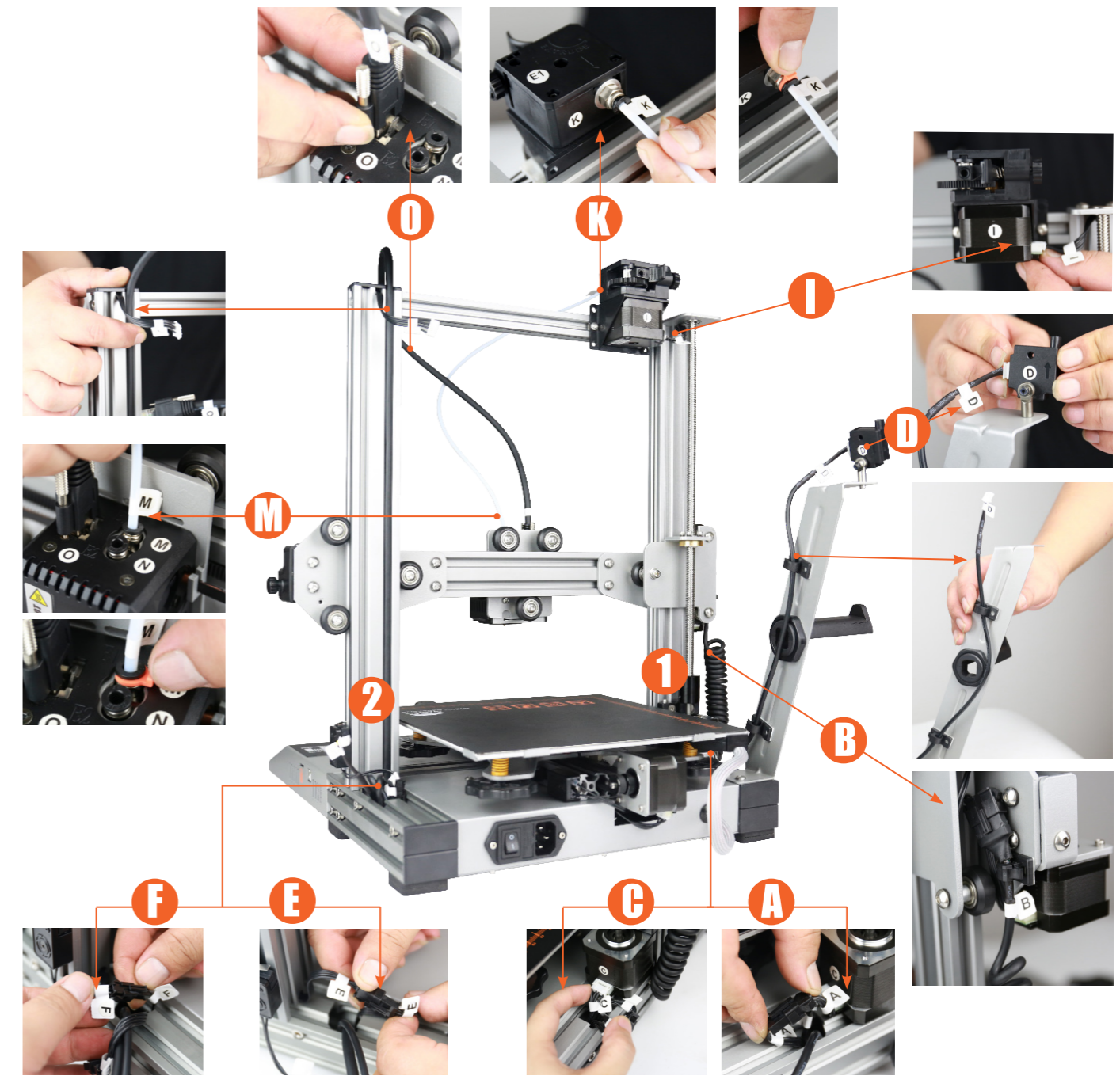


Twist the X axis belt tension adjusting knob clock wise to tighten the belt tension. You can check the tension by use one finger to push the belt. Either too tight or too loose would be perfect.



Twist the Y axis belt tension adjusting knob clock wise to tighten the belt tension. You can check the tension by use one finger to push the belt. Either too tight or too loose would be perfect.

# WIRING INSTRUCTION



**Note:** Please connect every wire according to it's Number which match to the corresponding connector.

**Congratulation! You have complete the installation of D12/230. You are now ready to boot up and print.**