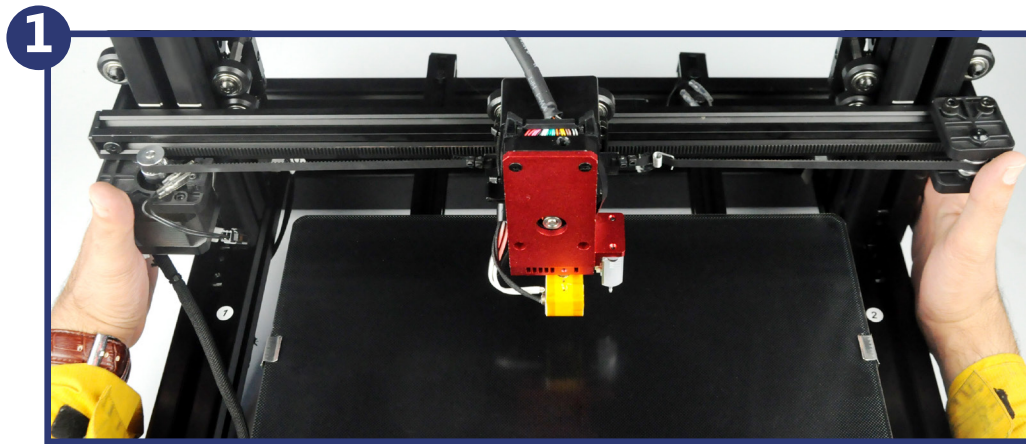
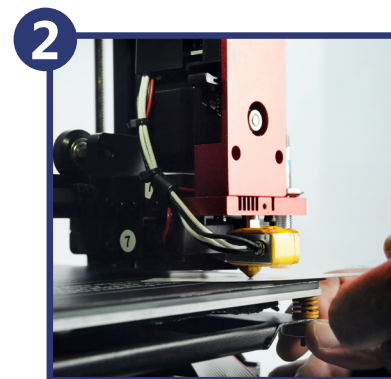


LEVELING BEFORE PRINTING



Rotate the couplers to lower the X rail along with Z pillars in order to level the two Z axis at same height. You can use the white lines in front of two Z pillars in order to do the alignment.

Note: The ruler or height guide would provide more accuracy for alignment in the both sides. The two axis need to be at same height.



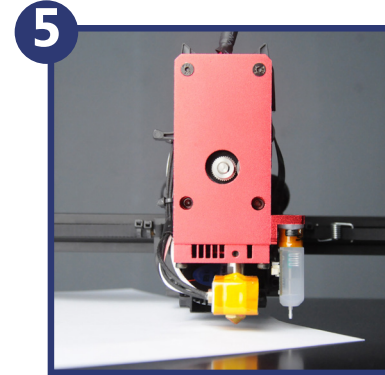
Release the 4 nuts several turns below the heating bed, so that the bed can be roughly parallel to the X axis bar.



Turn on the printer and wait the printer boots up. Then Click LEVEL.



Read the instruction, then click NEXT.



Insert the leveling card or an A4 paper between the nozzle and bed. Adjust the Z axis height until you can feel the friction while moving the card or paper.



Click the upper Z to move extruder up and click the lower Z to move extruder down. Stop clicking until you feel the leveling card getting friction while moving the card. By this way you are adjusting Z offset and setting the proper distance between nozzle and print bed.



Click NEXT to initiate auto leveling. Wait until the the head points all over the printing platform and leveling process is complete.

Congratulation! You have finish bed leveling. For video installation, please scan the QR code.



REV 2.1



MARKII DUPLICATOR 9 GETTING STARTED GUIDE



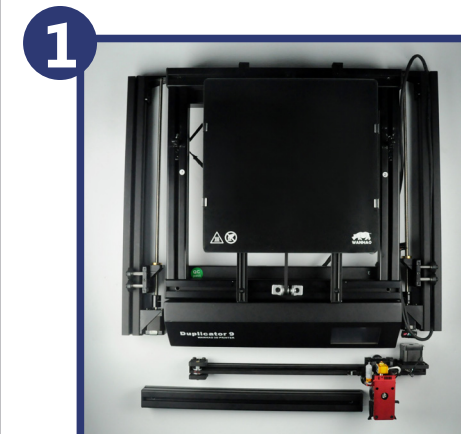
Thanks for choosing Wanhao 3D Printer products. You're just moments away from printing your first 3D model. It's important that you follow these steps carefully to ensure correct setup of your 3D Printer. You can also visit [www.wanhao3dprinter.com/Video/D9 video/wanhao D9 unboxing](http://www.wanhao3dprinter.com/Video/D9%20video/wanhao%20D9%20unboxing) for step by step guide on unboxing and setup, levelling, filament installation and printing.

Package Contents:

- | | |
|---------------------------|-----------------------------|
| 1 x WANHAO 3D Printer | 1 x Hex Key Wrench |
| 1 x Filament Spool Holder | 6 x Hex Bolts |
| 1 x Filament Spool Stand | 2 x Plastic Belts |
| 1 x Power Cable | 1 x 1.75mm PLA Filament |
| 1 x USB Cable | 1 x Instruction Manual |
| 1 x 8GB SD Card | 1 x Getting Started Guide |
| 1 x Hex Screw Driver | 1 x Extruder cleaning wire. |



ASSEMBLING AND MOUNTING



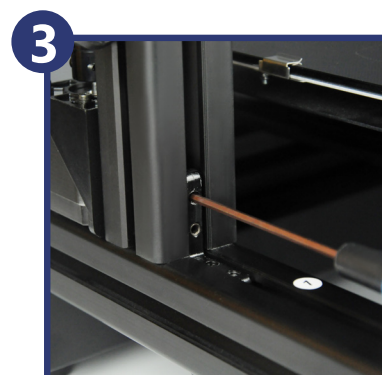
Take all the components out of the box and place them on the flat ground.

- 1-Base
- 2-Z axis Tower Pillar*2
- 3-X axis rail
- 4-X axis gantry
- 5-MK12 Extruder



Place the Base on it's side. Find the Z axis pillar with sticker No.1. Slide the No.1 pillar into the base vertical locker. Then tighten the bolt at bottom of base in order to mount the Z pillar tight on the printer's base.

CONSTRUCT AND CONNECT [CONT.]



Tighten the locking bolt clockwise. Then install the other Z axis pillar onto the Base on the other side of the printer.



Loose the two locking bolt on No.3 and No.4 Z axis pillar by around 5mm. So there will be sufficient space for X axis pillar to slide in.

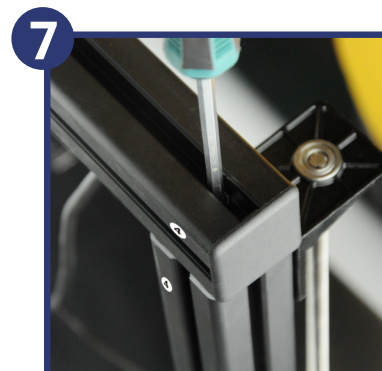


Slide the X axis pillar into the No.3 and No.4 bolts. If there's not enough space, you may need to loose the locking bolt in order to make more gap for Top gantry sliding. Note: Pay attention to the extruder cable before proceed sliding the gantry to Pillar No 4. Place it in the gap of intersection of two pillars.

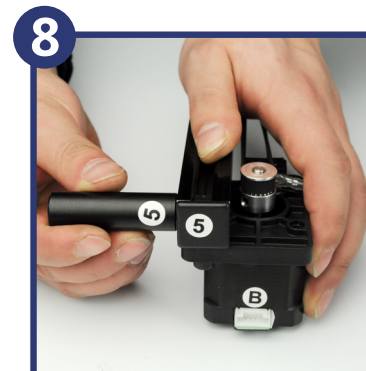


Place the plastic cover onto the two ends of top gantry.

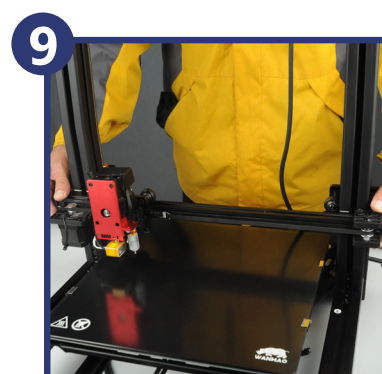
Note: Please double check the Z and X pillars. Make sure bolts are placed properly and secured. Ensure the gantries are steady and solid.



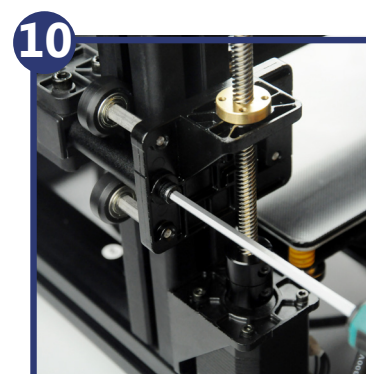
Use the Hex screw driver and tighten the locking bolt through the hole on top of the X and Z pillars. Lock both No.3 and No.4 pillars.



Rotate the cylinder holder for a bit but not too close. Tight enough that can not slide into X rail freely. This is also same to the other side with stickers No.6.



Mount the X rail. Align the right and left side holders first. You may need to adjust the distance to both ends through the cylinder holders.



Then tighten the bolts on both end of No.5 and No.6 in order to keep the X rail solid on the block holders and Z pillars.



Please put bolts and slider nuts together in two spots on the left and right strengthen bars and tighten a little bit, don't lock them together because you need to slide it in printer's gantry.



Remove the four plastic covers of the top and bottom gantries on the right and left side of the printer.



Slide the bar with bolt and nut inside the top gantry first and then slide the bottom one.



Please align the bars with edge of the gantries on the top and bottom of the printer on the both side.



Now hold the enhance bar aligned and tighten the bolt at top of bar. Re do this action for the other side of printer.



Now align the bottom of the bar with the bottom gantry and tighten them together and make sure is solid enough. This is also same with the other side of printer.



Put the bottom and top plastic cover back.



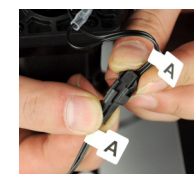
Readjust the rubber strip to hold the extruder cable inside the gantry.

WIRING INSTRUCTION

Lock the spool holder and stick the spring wire badge onto holder.



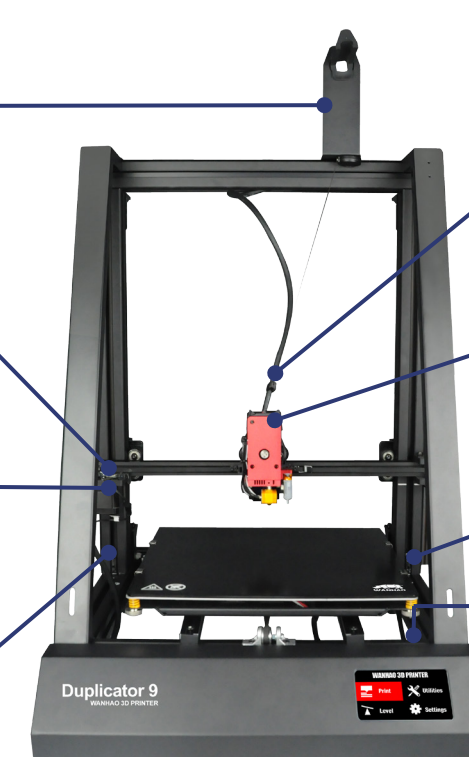
Connect the X axis end stop cable A to A connector.



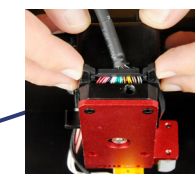
Connect the Z axis cable B to B connector.



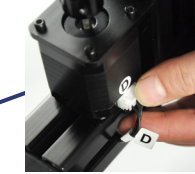
Connect the Z axis cable C to C connector.



Lock the spring wire hold onto the extruder end cable.



Insert the extruder cable E into extruder E socket. Lock the cable protector.



Connect the Z axis cable D to D connector.



Insert the extruder cable E into E socket.